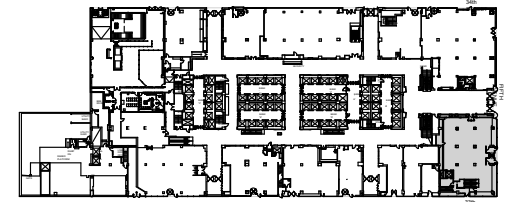


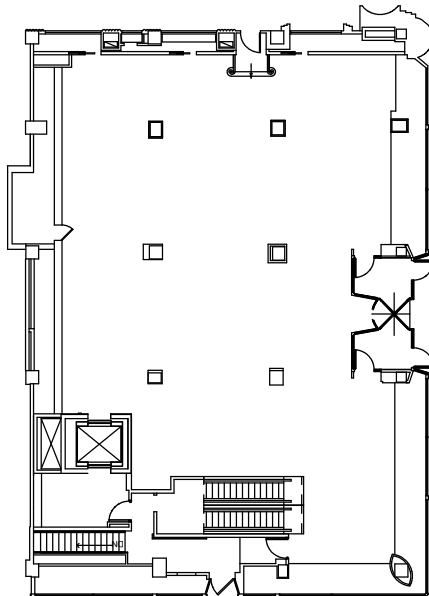
ESB

SUITE 101 | **5,219** SQ. FT. | **10'-9"** CEILING HEIGHT | **34'** FRONTAGE

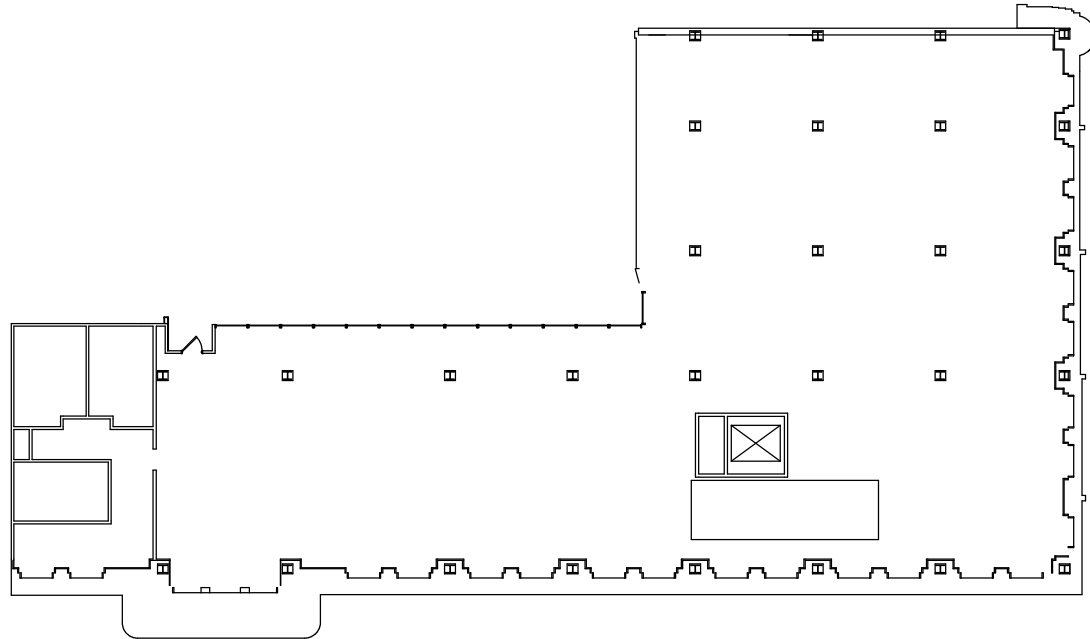
SUITE 201-209 | **9,673** SQ. FT. | **10'-8"** CEILING HEIGHT



KEY PLAN: NOT TO SCALE



Suite 101



Suite 201-209

